

# Quick Setup Guide LN Series



## Identify Your IP Camera



## LNE1001 LNE3003 LNZ4001 BEFORE YOU START

This Network Camera is designed for easy installation. However, before you continue, please read the following:

The Quick Start Guide refers to LNE1001, LNE3003 and LNZ4001 models and must be followed in sequence without skipping steps.

- When setting up the camera, use Internet Explorer only. After the initial setup, you can view the camera using Internet Explorer (with ActiveX), Mozilla Firefox and Safari.
- Steps 1 - 2 should be completed when your camera is connected wired before you can use the camera wirelessly.
- When connecting the camera to a wireless network, consider the following:
  - If your wireless router is not set up with wireless encryption, you can start the installation process immediately.
  - If your wireless router is set up with the encryption, please make sure you know the encryption key. If you do not know the encryption key (encryption password), please refer to your router's manual in order to reset the key.
  - If your wireless router is set up with a different type of encryption please refer to your router's manual in order to change encryption type to WEP - OPEN, WPA - PERSONAL, WPAZ - PERSONAL.
  - The camera is compatible with Macintosh for viewing only. Recording on Macintosh is not supported. When using Macintosh auto discovery "Bonjour" advanced knowledge is required. Please refer to "Setting Up Using Macintosh" FAQ on LOREX web site [www.lorextechnology.com](http://www.lorextechnology.com)

It really is that easy!



Available to Purchase:  
**16-CHANNEL INTELLIGENT SURVEILLANCE SOFTWARE SOLUTION**  
LDP1601  
[www.lorextechnology.com](http://www.lorextechnology.com)



## It's all on the Web



For detailed setup information, please refer to the User's Manual included inside the software/support CD. For additional information, please visit our website [www.lorextechnology.com](http://www.lorextechnology.com)

Information in this document is subject to change without notice. As our products are subject to continuous improvement, Lorex Technology Inc. and our subsidiaries reserve the right to modify product design, specifications and prices, without notice and without incurring any obligation. E&OE © 2010 LOREX. All rights reserved.

## SETUP YOUR CAMERA FIRST

### STEP 1

#### BASIC INSTALLATION GUIDE

Time: 10 Minutes | Hand Tools | Skills - Easy



**Broadband Router and Computer are required for local and remote monitoring (not included).**

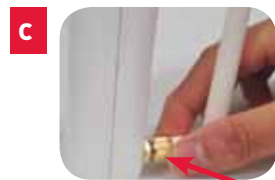
#### Set up Your Camera\*



Place the base of the camera on a flat surface and screw on the stand.



Attach the screw knob to the camera stand.



Attach the wireless antenna to the back of the camera.



Screw the camera to the camera stand.



Tighten the screw knob to secure the camera.

\* camera mounting options may vary by model.

#### f IMPORTANT

Connect the included network cable to the rear side of the LAN port on the bottom of the camera. Connect the other end of the network cable to the router, switch, or active wall port of your local network.



Plug the power adaptor into the power port of the camera. Plug the other end to an electrical outlet.

**NOTE:** Make sure the LED is lit on the front of the camera. If not, check that all cables are properly connected.

## DISCOVER & VIEW YOUR CAMERA ON THE LOCAL NETWORK

### STEP 2

#### BASIC INSTALLATION GUIDE

Time: 10 Minutes | Hand Tools | Skills - Easy



**NOTE:** This quick start guide refers to a Windows 7 & Vista™ installation.  
**NOTE:** For initial setup, you will need Internet Explorer (on PC using Windows Operating system only) as your default browser. Do not install DigiConsole until Step 2 is completed.

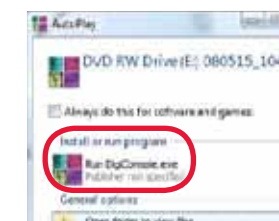
#### Launching the DigiConsole Software

Before launching the program, please make sure your computer is connected to the same local network as the camera and has access to the Internet. The camera must be connected using the included Ethernet cable for initial installation. It is recommended to setup the camera when your computer is wired to the local network. If you are using the wireless connection on your computer, please make sure you are connected to your wireless router (check wireless name - SSID).

a Insert the included DigiConsole Software CD into your CD/DVD-ROM drive.

b If the software runs automatically, please proceed to Step 2, section d.

If the pop-up window appears, click **Run Setup.exe** and continue to Step 2, section c.



#### Local Viewing

a Double-click the camera to launch **DigiViewer** in your browser.



b Enter **admin** in the **username** and **admin** in the **password** fields to access your camera. The browser will prompt you to install ActiveX.

**Did you know?** Depending on your browser security settings, you can use the "remember me" check option and the next time you will view the same camera using this browser it will renumber user name and password till you restart your computer.

c If a security pop-up window appears, click **Unblock** and **Continue** to allow DigiConsole to run.

**NOTE:** If the CD does not start automatically, please go to "Computer" ("My Computer" for Windows XP™ users) and double click on the CD Drive to run the application. Follow Step 2.

d Click **Find** to discover Lorex cameras on your network.

**OPTION:** If UPnP is enabled on your computer open the "Network" ("My Network Places" for Windows XP™ users) folder to view UPnP devices. (UPnP is disabled by default in Windows Vista™).

c If a security pop-up window appears, click **Unblock** and **Continue**. Click the warning on the browser bar and select **Install ActiveX Control**. Click **Unblock** or **Continue** in any preceding security pop-ups.

Click the warning bar (it will turn from yellow to blue) and select **Install ActiveX**.

d Click **Install** to start the installation. Click **Unblock** or **Continue** in any security pop-up. (This step is required only for first time set-up).

**Congratulations! Your camera is now set-up for local viewing**

## SET UP YOUR CAMERA ON THE WIRELESS LOCAL NETWORK

### STEP 3

#### BASIC INSTALLATION GUIDE

Time: 10 Minutes | Hand Tools | Skills - Easy



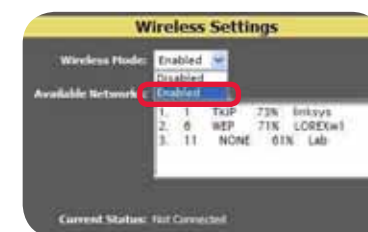
#### Setting up Wireless Connectivity

**CAMERA** must be **PLUGGED INTO YOUR ROUTER** BEFORE STARTING THE WIRELESS SETUP. Steps 1 - 2 should be completed.

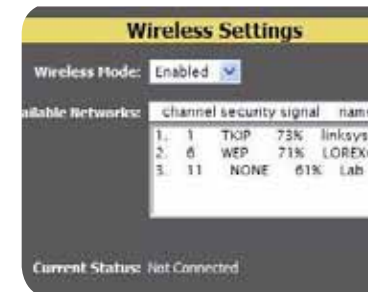
**ATTENTION:** This section is applicable to wireless camera models only. The cameras are B/G wireless devices. N wireless routers must be in "mixed B & G" mode (not in N mode) to detect the camera.

a From DigiViewer, click **Settings** and then click **Wireless**. DigiViewer automatically scans for any wireless networks.

If not already enabled, select **Enabled** from the Wireless Mode drop-down menu.



b From the list of available networks, select the wireless network for the device. If protection/encryption is enabled on the wireless router, you must enter the network password.



d 1. Click on **Settings, Preferences**. Beside "Wireless IP Address", there should be a populated IP address. This means that the wireless connection has been connected.  
2. Disconnect the network cable from the camera.  
3. Double-click the camera in the the Windows Network menu (**Start→Network**) to launch DigiViewer in your default browser.

**NOTE:** If using a Mac, use Bonjour in Safari to auto-detect your camera.

**Congratulations! Your camera is now set-up to work Wireless.**



## LOREX EASY CONNECT INTERNET REMOTE VIEWING - BASIC

### STEP 4A ON YOUR PC

REMOTE VIEWING INSTALLATION GUIDE  
Time: 20 Minutes | Hardware - PC | Skills - Easy

#### 1 Using Yoics

Your IP camera is designed to work with Yoics easy-connect remote access. Yoics remote viewing allows you to access your camera from a remote location without needing to configure your router.

**NOTE:** Decide whether you want your IP camera to connect to Yoics in wired or wireless mode. If you want your camera to operate wirelessly you must connect to your camera in wireless mode before creating a Yoics account. For details, see “**Setting Up Wireless Connectivity**” in the User’s Manual.

#### 2 Registering with Yoics

**Router port forwarding is not required**  
1. From **DigiViewer**, click **Settings** and then click **Remote Access**.

2. Under Yoics Instant Networking, click **Register this Camera**. The Lorex Remote Viewing page opens

**http://lorex.yoics.com**  
3. Enter your personal information in the necessary fields and **create an account**.

**NOTE:** There is no “www” in front of the address. The camera must be connected to your local network router for Yoics to automatically detect the system.

#### 3 Registering your Camera

1. A pop-up window opens and informs you that your camera has been detected. Click **CONTINUE** in the registration screen to enable Yoics Easy Connect.
2. You can rename your camera (e.g. myoffice). Click **REGISTER NOW**. After the registration your IP camera will appear on the left side bar under **My Stuff/Cameras**

**NOTE:** This service is provided free of charge. You do not have to click the Upgrade Now button to use the Remote Viewer service.

#### 4 Connect to your IP Camera

1. Double click your IP Camera to view live camera images. Double click on the camera’s name to view the feed.

Enter the IP Camera’s **user name (admin)** and **password (admin)** to login to the device.

Congratulations! Now that you have a Yoics account set up you can log in to **http://lorex.yoics.com** to remotely view your cameras from anywhere in the world using Internet Explorer web browser (Windows operating system only).

## LOREX EASY CONNECT INTERNET REMOTE MONITORING ADVANCED (AUTO PORT FORWARD WIZARD)

### STEP 4B

### OPTIONAL ON YOUR PC

#### 1 Locate your IP & MAC Addresses:

1. Run **DigiConsole** from the included software CD.
2. From the main menu, click **Find** to open the list of devices. DigiConsole automatically locates all available Internet cameras on the network.
3. Locate the **IP** and **MAC** addresses next to the device icon.

Record the IP and MAC Addresses in the section below:

**IP ADDRESS :** \_\_\_\_ . \_\_\_\_ . \_\_\_\_ . \_\_\_\_

**MAC ADDRESS :** \_\_\_\_ : \_\_\_\_ : \_\_\_\_ : \_\_\_\_ : \_\_\_\_ : \_\_\_\_  
(Required for DDNS registration)

Ports (by default): **80 (Web Port)**, **554 (Video Port (RTSP))**

#### 2 Auto Port Forward Wizard

The Lorex Auto Port Forwarding Wizard is a software that automates router port forwarding.

You must have the following before you configure the software:

1. Your router’s **model** and **version** numbers
2. Your router’s **user name** and **password**
3. Your Lorex device’s **IP** address
4. Your Lorex device’s **port** numbers that require port forwarding

#### 3 Installation

1. From the DigiConsole main viewing window, click on **LOREX EASY CONNECT WIZARD** and follow the instructions on the website to register, download and launch the Wizard.

#### 4 Step 1: Populate the Router Database

The Auto Port Forwarding Wizard automatically populates a list of current routers, and detects the number of connected routers.

1. Click the **Next** button after the software detects your router configuration.

#### Step 2: Enter your Router Settings

1. Under the Router drop-down list, select the model of your router **OR** click the **Search** button to enter the name of your router model.

**NOTE:** Ensure you select the proper model and firmware number of the router.

- NOTE:** Click the **Auto Detect** button if you have a Linksys or Netgear router (works with most models).
2. Under **Router IP**, click the **Detect Router IP** button. The router’s IP populates in the blank field.
  3. Under **Username** and **Password**, enter **the router’s** username and password.
  4. Under **IP**, enter the IP address of your Lorex device (refer to **Step 4B-1**).
  5. Under **Port**, enter the port number(s) that require forwarding (Web Port: 80, Video Port (RTSP): 554)
  6. Click **Next** to continue.

## LOREX EASY CONNECT INTERNET REMOTE MONITORING ADVANCED

### STEP 4B CONTINUED

### DDNS ON YOUR PC

#### Step 3: Update the Router Settings

1. Click the **Update Router** button. The program begins updating the router settings. This may take 20 - 30 seconds.
2. Close the **update** window when the update finishes.

**NOTE:** You may have to manually **save** your router settings after the software makes the required changes to your router.

#### Step 4: Test your Connection

1. Click the **Test Your Connection** button. Your system’s default browser opens and connects to your Lorex device.
2. Enter the IP Camera’s **user name (admin)** and **password (admin)** to login to the device.

**NOTE:** Ensure that Internet Explorer is your system’s default internet browser.

#### 5 Manual Port Forward: **OPTIONAL**

**If you were unable to port-forward your router automatically using the wizard, you will need to do so manually.**

All routers are different. To port forward your router, please refer to your router’s user manual.

An example of a port forwarding screen is shown for illustration purposes.

Ports: **80 (Web Port)**, **554 (Video Port (RTSP))**

#### EXAMPLE

Application	Start	End	Protocol	IP Address	Enable
System	80	to 80	Both	192.168.1.12	<input checked="" type="checkbox"/>
System	554	to 554	Both	192.168.1.12	<input checked="" type="checkbox"/>

#### 6 DDNS (Dynamic Domain Name System) Set-up:

Open your web browser (Internet Explorer by default) and enter **http://www.lorexddns.net** in the address bar.

**http://www.lorexddns.net**

#### 7 Create Account:

## LOREX EASY CONNECT INTERNET REMOTE MONITORING ADVANCED

### STEP 4B CONTINUED

### DDNS ON YOUR PC & IP CAMERA

#### 8 Complete New Account Information:

1. For **PRODUCT LICENSE** select the **LNE-LNZ Series** option from the drop down menu.
2. For **PRODUCT CODE** enter the Monitor’s **MAC** address (recorded in **Step 4B-1**).
3. For **URL REQUEST** enter a unique URL name (e.g. **tomsmith**). **NOTE:** URL name should not be more than 15 characters.

#### 9 Registration Email:

An automated **REGISTRATION CONFIRMATION EMAIL** will be sent to your email. Print and Save this confirmation. You will need this information to access your System remotely.

**Service Provider:** **dns1.lorexddns.net**

**Domain Name:** **tomsmith.lorexddns.net**

**User ID:** **tomsmith**

**Password:** **(your password)**

**EXAMPLE**

#### 10 Configure DDNS in Digiviewer

1. Open DigiViewer:
  - Open directly in your web browser using your device’s **IP address** (refer to Step 4B-1.)

**OR**

- From **DigiConsole**, from the **Find** menu, right-click the device and select **Open Device in Browser**
2. Enter the IP Camera’s **user name (admin)** and **password (admin)** to login to the device.
  3. From the **DigiViewer** main window, click **Settings** and then click **Remote Access**.
  4. Under Dynamic DNS, select **Enable Lorex Dynamic DNS Service**.
  5. Enter the **domain name (e.g. tomsmith.lorexddns.net)**, you only need to enter **tomsmith** in the text field and your **user name** from the **DDNS confirmation email**. DigiViewer will automatically update with your newly entered DDNS information.
  6. Click the **Submit Remote** button to complete the setup.
  7. Click **System Log** and scroll down to check if your DDNS Setup was successful.
  8. Click **Surveillance** to return to the main window to ensure the changes have been implemented.

**NOTE:** If you have not already registered for free Lorex DDNS Service, click **Register with DDNS Service** at the bottom of the remote access window to go to the Lorex DDNS website.

Congratulations! You have completed 4B successfully. Your camera is now set-up for remote viewing on any PC. You can now log into your Lorex account from anywhere in the world with your DDNS URL address.

## REMOTE VIEWING USING **iPhone™**, **iPod Touch™** & **iPad™**



The iPhone, iPod Touch and iPad are capable of remotely viewing the LN series cameras. To do this you will need to download an App onto your device.

- iPhone, iPod Touch Users must download the **Lorex Live 2 App** from the App store.
- iPad users must download the **Lorex iMobile App** from the App store.

#### System Requirements:

1. iPhone/iPod Touch users: Must have OS version 3.1.2 or greater.
2. iPad users: Must run OS version 3.2 or greater.

#### Downloading the App:

You must download the application from the Apple App Store. **NOTE:** You must create an App Store account before you can download content. A valid credit card is required to create an account, however the download of the above Apps is free of charge.

- Launch the **App Store** application from your device.
- iPod, iPod Touch users: Search for **Lorex Live 2**
- iPad users: Search for **Lorex iMobile**.

**For detailed setup information, please refer to the User Manual included inside the software CD.**