

Contents



1 x HD Video Sunglasses



1 x Sunglasses Case



1 x Power Adapter



1 x mini-USB Cable



1 x Lens Cleaning Cloth



1 x Clear Lenses



2 x Black Arms

Safety

- Do not point the camera directly at the sun as this may damage the camera.
- Do not use in temperatures colder than -4°F / -20°C or warmer than 104°F / 40°C
- Camera is not water resistant. Do not get the camera wet.
- Do not use power adapters other than the one provided.
- Do not charge the camera for more than 12 hours at a time.
- It is recommended to turn off the camera while charging.
- Transport the camera inside the sunglasses case to avoid pressing the Power/Record button accidentally.
- Only use a soft, clean cloth, such as the one provided, to clean the glasses. Do not use harsh or abrasive cleaners.

Overview



Troubleshooting

Problem	Solution
Camera fails to start	<ul style="list-style-type: none"> • The camera battery is discharged. Charge the camera. • The camera has encountered an error. Press the Reset button.
Camera shuts-off immediately after starting or the green LED is flashing	<ul style="list-style-type: none"> • The camera battery is discharged. Charge the camera. • microSD card has not been inserted. A microSD card (not included) is required for recording. • The microSD card is full. Remove the files saved on the microSD card or insert a fresh microSD card. Note that on Mac, you must empty the Trash to delete video files from the camera.
Device is not recognized by computer	<ul style="list-style-type: none"> • mini-USB cable is broken. Replace the cable. • USB port is broken. Try a different USB port.
Incorrect time stamps on videos	<ul style="list-style-type: none"> • See Setting the Time and Date for instructions on setting the time.



HIGH DEFINITION VIDEO SUNGLASSES

Quick Start Guide
English Version 1.0



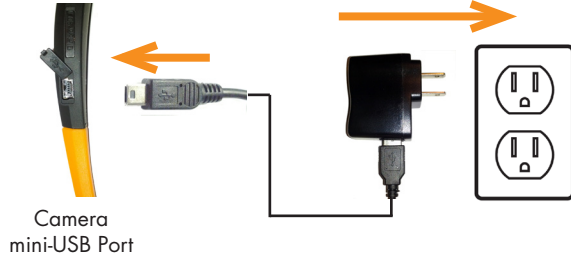
**FOR SUPPORT AND INFORMATION,
VISIT WWW.LOREXTECHNOLOGY.COM**

Copyright © 2012 Lorex Technologies Inc.
As our products are subject to continuous improvement, Lorex reserves the right to modify product design, specifications and prices, without notice and without incurring any obligation. E&OE
All trademarks belong to their respective owners. No claim is made to the exclusive right to use the trademarks listed, other than the trademarks owned by Lorex Technology Inc.

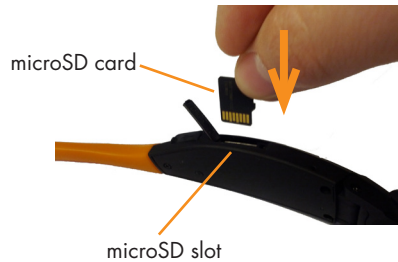
ACTIVE
LSC002 / LSC003

Getting Started

1. Connect the mini-USB cable to the camera and the power adapter. Connect the power adapter to a power outlet.



2. Charge the camera for **4 hours** to fully charge.
3. Disconnect the USB cable from the camera and insert a microSD card (not included) into the camera and push it down until it clicks into place.



NOTE: The camera can support microSD cards up to a maximum size of 32GB.

4. Press the Power/Record button once to turn on the camera. The camera begins recording immediately. The blue LED flashes to indicate recording is active.



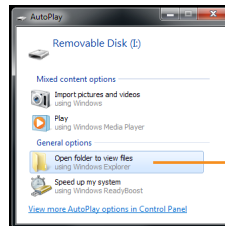
5. To stop recording, press and hold the Power/Record button.

System Requirements

- **PC:** Windows 7
- **Mac:** OS 10.5 or higher
- Minimum 10GB free hard drive space to save recordings

Accessing/Saving Videos on your Computer

1. Connect the mini-USB cable to the camera and connect the other end to your computer. The computer will recognize the camera and automatically install drivers.
2. **Windows:** An Autorun window appears. Click **Open folder to view files**. If Autorun does not appear, open Computer and double-click **Removable Disk**.



Click Open folder to view files

OR

Mac: Double-click the removable disk folder on the Desktop.



Removable disk folder

3. Double-click the **DCIM** folder then the **100MEDIA** folder to access your videos.
4. Your videos are saved in .mov format. Double-click videos to open. Copy videos to a folder on your computer to save them to your hard drive.

NOTE: You may need to install Quicktime Player to watch videos. Quicktime Player is a free download from www.apple.com

Setting the Time and Date

Setting the time and date affects the time stamps on the videos.

To set the time and date:

1. Connect the camera to your computer and open it using steps 1 & 2 under Accessing/Saving Video on your computer.
2. Open a text editor (such as Notepad for PC or TextEdit for Mac).
3. Enter the current time in the following format:
 - **YYYY MM DD hh mm ss**
 - Time is in 24-hour format.
 - For example, if the time and date is: 11:21:05 AM, June 22, 2012, enter **2012 06 22 11 21 05**.
4. Save the file to the **Removable Disk** folder (do not save to DCIM or 100MEDIA) of the camera as a plaintext file (e.g. .txt) with the filename **time**.

TIP: To test if the time and date was saved successfully, disconnect the camera and record a video. Then reconnect the camera and check the time stamp.

Changing the Lenses

Take care when changing lenses to avoid breaking them.

To change the lenses:

1. From one side, hold the frame with one hand and grip the lenses with the other. Firmly pull the lenses down from the frame. The lenses will pop out of the frame.
2. Starting at one side, snap the replacement lenses into the frame. Make sure the replacement lenses snap into both sides and the middle, and that they go under the edge of the frame.



Left Side



Middle



Right Side