

KEEP IN TOUCH STAY CONNECTED



Remote Connectivity & Compatibility



- ADVANCED 960H RECORDING RESOLUTION
- ULTIMATE REMOTE CONNECTIVITY
- MIRROR HARD DRIVE RECORDING
- EXPANDABLE STORAGE SPACE
- HIGH DEFINITION HDMI OUTPUT
- MULTI-TOUCH INTERFACE

**PREMIUM
SERIES**

8 OR 16 CHANNELS

4 OR 8 CAMERAS

1 OR 2 TB

700 TVL RESOLUTION

**120/85 FT NIGHT VISION
BULLET CAMERA**

**75 FT NIGHT VISION
DOME CAMERA**

960H

VANTAGE

LH340 EDGE3 Series



www.lorextechnology.com



LOREX[®]
VIEW YOUR WORLD[®]

SECURITY CAMERA SYSTEM

RECORD IN HIGHER RESOLUTION

960H records with 34% more resolution than D1, offering a true to life aspect ratio that provides sharper, more detailed, and non-stretched images.¹

MIRROR RECORDING

Secure your data by simultaneously recording footage to an external USB hard drive (not included).⁴

EXPANDABLE STORAGE

Connect to an external USB hard drive & increase the recording capacity of your system.⁴

KEEP IN TOUCH WITH YOUR WORLD

Use your smartphone, tablet, PC, or Mac to connect, view and control your system.

EASE OF USE, END TO END

Internet setup wizard, touch operation and dedicated Apps give you the peace of mind at the tip of your fingers.



Monitor not included.

VANTAGE

LH340 EDGE3 Series

www.lorextechnology.com



LOREX[®]
VIEW YOUR WORLD[®]

SECURITY CAMERA SYSTEM

DVR FEATURES:

- 960H (960x480) records with 34% more resolution than D1, offering a true to life aspect ratio that provides sharper, more detailed, and non-stretched images ¹
- HDMI output resolution 1080p (1920x1080) for simple connection to HDTVs ²
- TRIPLE TOUCH technology using a touch screen monitor³, light touch front panel controls, smartphones/tablets
- 24x7 100% duty cycle HDD
- Pentaplex operation - View, Record, Playback, Backup & Remotely control the system simultaneously
- Recording options : Motion, schedule or continuous
- 3 x USB 2.0 ports (mouse, touch monitor, backup, firmware upgrade)
- Mirror Hard Drive Recording - secure your recordings by backing up footage to an external hard drive at the same time as recording to the DVR hard drive ⁴
- Expandable storage - connect an external USB hard drive to increase recording capacity ⁴
- Swipe-to-Switch dynamic allocation of camera location in live viewing
- Intuitive search at your finger tips with multi-channel preview second by second
- Scroll-to-Search through recorded event list with image preview
- Covert camera feature allows the DVR administrator to monitor cameras while hiding them for regular users.
- Multi-language interface (21 languages supported)
- PTZ cameras supported (RS485)
- Small form factor (11.6 x 6.5 x 1.3")
- VESA Mount (easily mounts to the back of an LCD monitor) ^{††}
- "Flex" IR extender for remote control (line-of-sight not required)

CONNECTIVITY:

- Instant Mobile Viewing on compatible Smartphones[†]
- Dedicated iPad[®] app with multi-channel live viewing, playback, backup & setup
- Exclusive LOREX Easy Connect Internet Set-up Wizard ⁵
- Lorex Edge Client Software:
 - PC (Microsoft Windows[™] 8 (extend your touch experience), 7, Vista, XP compatible using client software (included) & web browser.
 - Mac remote client software (included)
- Free LOREX DDNS (Dynamic Domain Name Service) for advanced remote connectivity at all times
- Instant e-mail alerts with snap shot attachments and web link
- Advanced Management Software - control multiple DVRs in different geographical locations (home/business/vacation properly) via client software & mobile Apps

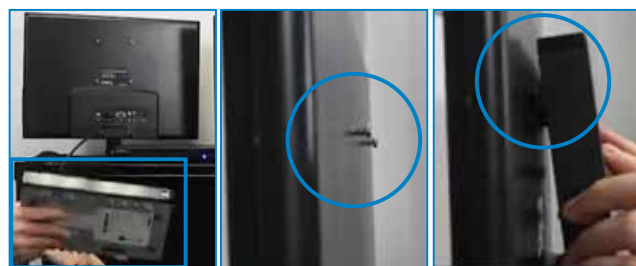
COMPLIANCE:

- CEC energy efficient power adapter
- Energy efficient HDD
- ROHS
- Industry standard video inputs (BNC) and outputs (HDMI, VGA)



VESA MOUNT

†† Easily mounts to the back of an LCD monitor (requires clear access to the VESA mounting holes).



VANTAGE

LH340 EDGE3 Series

www.lorextechnology.com



LOREX[®]
VIEW YOUR WORLD[®]

SECURITY CAMERA SYSTEM

ADDITIONAL DVR FEATURES:

- Detail you can count on day and night. HD output (HDMI) with exceptional playback quality ²
- Keep in Touch with your world on your smart phone, tablet, PC or Mac. Use the most touch intuitive DVR that's compatible with Windows 8 to connect, view and control your system
- Reliability you can depend on. Powerful performance in a compact size
- Slim yet powerful. The smallest full-featured DVR in the market
- Ease of use, end to end. Internet setup wizard, touch operation and dedicated Apps give you the peace of mind at the tip of your fingers
- Finger -tip operation. Point, Tap, scroll and swipe to control your DVR
- Scroll-to-Search. Unique event log search while viewing playback footage for an efficient review of events that happened in the course of a day



VANTAGE

LH340 EDGE3 Series



www.lorextechnology.com



VIEW THE NIGHT - AS CLEAR AS DAY

- ▶ SUPERIOR DETAIL
- ▶ VANDAL RESISTANT
- ▶ CLEAR-NIGHT TECHNOLOGY

960H

HIGH PERFORMANCE

Experience the exceptional, powered by the latest 960H Sony EXview™ II image sensor.

960H RESOLUTION

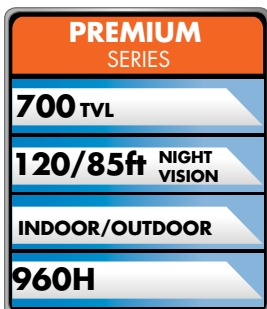
Providing 34% more detail than standard D1 resolution and a 500% increase over CIF, delivering a sharper, non-distorted image with a true-to-life aspect ratio.

EXCEPTIONAL NIGHT VISION

ClearNight technology with Digital Noise Reduction improves low light performance and recording efficiency up to 30%.

FEATURES

- Advanced Sony EXview™ II image sensor
- Video image processor delivers up to 700TV lines of resolution
- 960H optimized image sensor delivers up to 34% more resolution than D1 and 5x more than CIF ⁶
- Offers a true to life non-stretched aspect ratio that provides sharper, more detailed images ⁶
- Wide angle lens for wide area coverage (90° FOV) ⁷
- ClearNight imaging technology ensures clear night vision and improves recording efficiency up to 30%
- Night Vision up to 120ft away in ambient lighting conditions and up to 85ft away in total darkness ⁸
- Split glass design minimizes IR reflection
- Weatherproof (IP66) rated aluminum housing for indoor/outdoor installations ⁹
- Robust vandal resistant housing with cable pass-through bracket



VANTAGE

LH340 EDGE3 Series



LOREX
VIEW YOUR WORLD®

SECURITY CAMERA SYSTEM



HOME



BUSINESS



RETAIL



COMMERCIAL

SEE IT ALL - IN GREATER DETAIL

- ▶ BEST-IN-CLASS NIGHT VISION
- ▶ OUTSTANDING IMAGE QUALITY
- ▶ FLEXIBLE INSTALLATION

960H

HIGH PERFORMANCE VIDEO

With Extreme Resolution (700 TVL) for amazingly detailed images

EXceptional Night Vision

Latest Sony EXview™ II sensor offers best low light performance

EFFICIENT VIDEO RECORDING

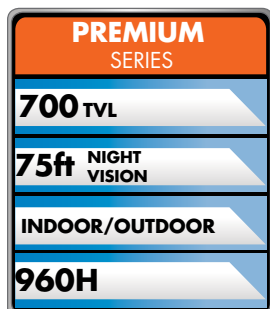
Digital Noise Reduction improves night vision clarity and saves recording hard drive space

FEATURES

- Advanced Sony EXview™ II image sensor
- 960H optimized image sensor delivers up to 34% more resolution than D1 and 5x more than CIF ⁶
- Offers a true to life non-stretched aspect ratio that provides sharper, more detailed images ⁶
- Video image processor delivers up to 700TV lines of resolution launch kku date finalize panniaacha
- Night Vision up to 75ft (23m) away in total darkness ⁷
- ClearNight imaging technology ensures clear night vision and improves recording efficiency up to 30%
- Wide angle lens for wide area coverage (79° FOV) ⁸
- Weatherproof (IP66 rated) aluminum housing for indoor/outdoor installations ⁹



- ✓ Higher resolution
- ✓ True aspect ratio
- ✓ Sharper picture



VANTAGE

LH340 EDGE3 Series

RESOLUTION



Standard Resolution



Super+ Resolution

NIGHT VISION



Typical



Low light viewing - stays in color longer*

www.lorextechnology.com



LOREX[®]
VIEW YOUR WORLD[®]

SECURITY CAMERA SYSTEM

Product Information

SYSTEM

Operating System:	Linux (embedded)
Pentaplex:	Simultaneous View, Record, Playback, Backup & Remote Configuration

Number of Channels: **8/16 Channel**

Inputs/Outputs

Video In:	8/16 x 1Vpp, CVBS, 75ohms, BNC
VGA Out:	VGA compatible
HDMI Out:	HDMI compatible
Audio In:	1 Line in(RCA)
Audio Out:	1 line out(RCA)
USB Port:	2 front & 1 back
PTZ Control:	RS485

Display

Live Display:	1 or 4 or 9 (8ch), 1 or 4 or 9 or 16 (16ch)
Live Display Speed:	240/480 (8/16ch NTSC) 200/400 (8/16ch PAL)
OSD:	ON/OFF
Activity Detection:	1320
Sensitivity Levels:	100
System Control:	USB Mouse, Front Panel Controls, Handheld Remote Control, Touch Screen (Windows 7 touch compatible)
Firmware Upgrade:	Via USB device
User Authority:	ADMIN/USER1/USER2
Audio:	1-way audio conference (via network)

RECORDING

Video Compression:	H.264
Audio Compression:	PCM
Recording Speed & Resolution:	8/16 Channel 240/200 @ 352x240 / 352x256 (NTSC/PAL) 120/160 @ 480x240 (NTSC) 100/133 @ 480x288 (PAL) 120/100 @ 720x240 / 720x256 (NTSC/PAL) 60/50 @ 720x480 / 720x512 (NTSC/PAL) 100/80 @ 960x240 / 960x288 (NTSC/PAL) 50/40 @ 960x480 / 960x576 (NTSC/PAL)

Recording Resolution Setting:	Programmable per camera
Recording Quality Control:	5 levels
Image Size:	32 Kbyte (960X480), 16 Kbyte (960X240) 24 Kbyte (704x480), 12 Kbyte (704x240) 6 Kbyte (352x240)
Recording Schedule:	By hour, by day, by recording mode, by Ch
Recording Modes:	Continuous, motion activated
Pre Recording:	Max. 10 seconds
Post Recording:	Max. 255 seconds
Reliability:	Watch-Dog, Auto-recovery after power failure
Covert Video:	Dynamic allocation of cameras

PLAYBACK

Playback Display:	1,4,9 (8ch), 1,4,9,16 (16ch)
Instant Playback:	for quick review of log events
Playback Speed:	Variable (1, 5, 15, 60)
Playback Player:	Apple QuickTime multi-hour Player
Backup Player:	Apple QuickTime multi-hour Player
Search:	By time, event, scroll, frame, date, file

STORAGE & ARCHIVE

Storage:	Up to 1 HDD (SATA)
Maximum Capacity:	Up to 2TB
Backup Media:	USB Flash Drive (max 16GB)
Backup File Format:	MOV file (Codec included)
Bookmark Archiving:	Supported

STORAGE & ARCHIVE

Storage:	Up to 1 HDD (SATA)
Maximum Capacity:	Up to 2TB
Backup Media:	USB Flash Drive (max 16GB)
Backup File Format:	MOV file (Codec included)
Bookmark Archiving:	Supported

CONNECTIVITY

Easy Connect:	Lorex Auto Port Forward Wizard
Software:	Edge Client Software for PC & Mac
Supported Operating Systems:	Windows™: 8, 7, Vista, XP Mac
Browsers:	Internet Explorer, Google Chrome (IE Tab), Mozilla Firefox (IE Tab)
Email Notification:	Text with weblink & snap shot attachment
Mobile Connectivity:	iPad®, iPhone™: 4.0 and above, Blackberry™ - (supported model numbers: 9800, 9700, 9000, 8900), Android (version 2.1)
DDNS:	Free Lorex DDNS
Web Server Port:	Programmable by User
Network Protocol:	LAN, DHCP, Dynamic IP, DDNS
Network Interface:	10/100Base-TX, RJ-45
Network Speed Control:	10 levels (28.8Kb ~ 1.5MB)/sec.

GENERAL

Power Consumption:	Approx. 30 watts
Supply Voltage:	100VAC-240VAC, 12VDC, 2.5A, 50/60Hz
Unit Dimensions (W x D x H):	11.6" x 6.2" x 1.1" 295mm x 167.4mm x 34.0mm
Unit Weight:	3.2 lbs
Operating Temperature:	41° ~ 104° F / 5° ~ 40° C
Humidity:	10 ~ 75% NC

VANTAGE

LH340 EDGE3 Series

www.lorextechnology.com



LOREX[®]
VIEW YOUR WORLD[®]

SECURITY CAMERA SYSTEM

Product Information

CAMERA (MCB7041):

Image Sensor	1/3" 960H Sony EXview, HAD™ CCD II
Video Format	NTSC
Effective Pixels	H: 976 V: 494
Resolution	up to 700 TV Lines
Scan System	2:1 Interlace
Sync System	Internal
S / N Ratio	>50dB (AGC Off)
Iris	AES
AES Shutter Speed	1/60 ~ 1/100,000 sec.
Min. Illumination	0.15 Lux without IR LED , 0 Lux with IR LED
Video Output	Composite 1.0Vpp @ 75ohm
Lens / Lens Type	3.6mm F2.0 / Fixed
FOV (Diagonal)	90°
Termination	BNC Type
IR LED Qty. / Type	18 pieces / 850nm
Night Vision Range	120ft (37m) / 85ft (26m) ³
Power Requirement	12V DC ±10%
Power Consumption	Max. 370mA (w / IR)
Operating Temp. Range	14° ~ 122°F / -10° ~ 50°C
Operating Humidity Range	< 80% RH
Environmental Rating	IP66
Weight (including stand)	0.6lbs / 0.2kg

CAMERA (LDC7051):

Image Sensor:	1/3" Sony EXview HAD™ CCD II
Video Format:	NTSC
Effective Pixels:	H: 976 V: 494
Resolution:	Up to 700 TV Lines
Scan System:	2:1 Interlace
Sync System:	Internal
S/N Ratio:	+50dB (AGC Off)
Iris:	AES
AES Shutter Speed:	1/60 ~ 1/100,000 sec.
Min. Illumination:	0.15 Lux without IR LED 0 Lux with IR LED
Video Output:	Composite 1.0Vpp @ 75ohm
Lens/Lens Type:	3.6mm F2.0/Fixed
FOV (Diagonal):	79°
Termination:	BNC Type
IR LED Qty./Type:	14 pieces/850nm
Night Vision Range:	75ft/23m
Power Requirement:	12V DC ±10%
Power Consumption	Max.: 250mA (w/IR)
Operating Temp. Range:	14° ~ 122°F/-10° ~ 50°C
Operating Humidity Range:	< 90% RH
Environmental Rating:	IP66
Weight:	0.8lbs/0.4kg

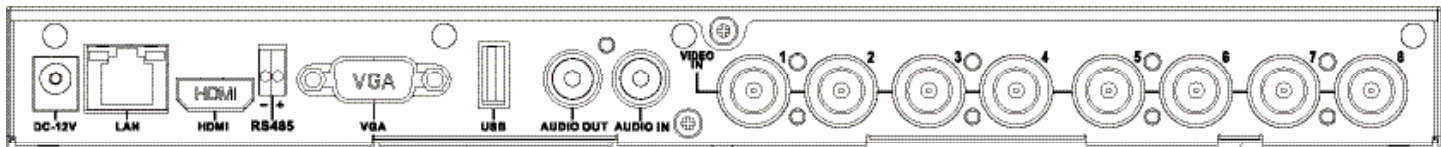
VANTAGE

LH340 EDGE3 Series

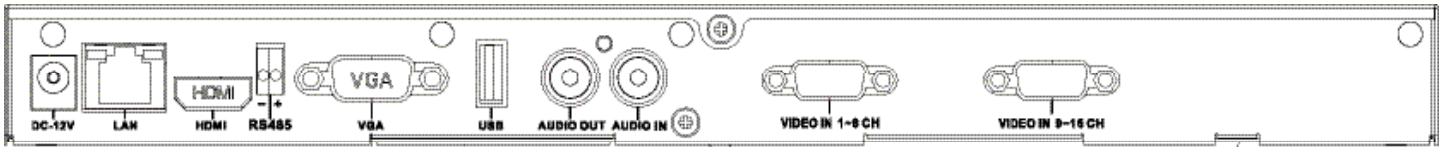
www.lorextechnology.com

DVR Back Panel

8 Channel DVR



16 Channel DVR

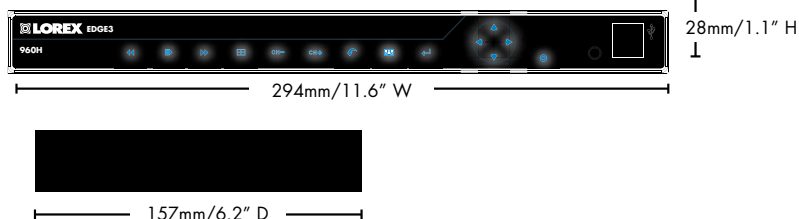


Product Information:

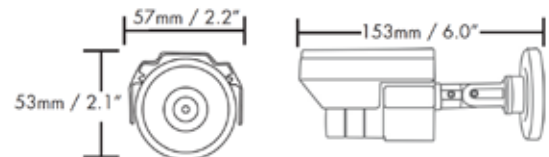
MODEL	CONFIGURATION	PACKAGE	W x D x H - Inches & mm	WEIGHT	CUBE	UPC Code
LH3481001C4B	8 ch Edge3 DVR x 4 (700) TVL Cameras (MCB7041) x 1TB HDD	Brown Box	320mm x 349mm x 317mm / 12.75" x 12.75" x 8.4"	6.3 kg / 14.0 lbs Estimated	0.022 CBM / 0.79 CBF	7-78597-34814-9
LH3481001C8B	8 ch Edge3 DVR x 8 (700) TVL Cameras (MCB7041) x 1TB HDD	Brown Box	596mm x 317mm x 349mm / 23.5" x 12.5" x 13.75"	13.6 kg / 30 lbs Estimated	0.0039 CBM / 0.14 CBF	7-78597-34818-7
LH3462001C8B	16 ch Edge3 DVR x 8 (700) TVL Cameras (MCB7041) x 2TB HDD	Brown Box	596mm x 317mm x 349mm / 23.5" x 12.5" x 13.75"	13.6 kg / 30 lbs Estimated	0.0039 CBM / 0.14 CBF	7-78597-34628-2
LH348811B	8 ch Edge3 DVR x 4 (700) TVL Cameras (MCB7041) x 4 (700) TVL Cameras (LDC7051) 1TB HDD	Brown Box	596mm x 317mm x 349mm / 23.5" x 12.5" x 13.75"	15.8 kg / 35 lbs Estimated	0.0039 CBM / 0.14 CBF	7-78597-34811-8
INCLUDES	8 or 16 Channel DVR with pre-installed HDD, Remote Control, Flex IR, Mouse, Ethernet Cable, 2 screws (for key-hole style VESA mounting), Power Adapter, Quick Start Guide, User Manual, CD with Client Software and Auto Port Forward Wizard, 4 or 8 x Cameras, 4 or 8 x Camera Stands, 4 or 8 x 60ft BNC/DC Extension Cables, 1 or 2 x 4 in 1 Camera Power Adaptor(s)					

Dimensions:

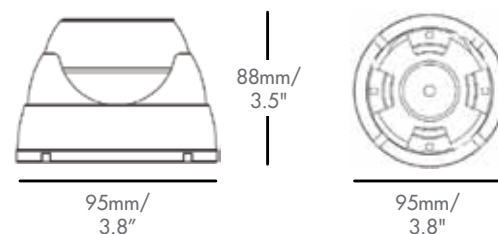
DVR



CAMERA (MCB7041)



CAMERA (LDC7051)





LOREX[®]
VIEW YOUR WORLD[®]

SECURITY CAMERA SYSTEM

Product Information

DISCLAIMERS:

1. When used with 960H compatible cameras. DVR is backwards compatible and supports different camera inputs: standard resolution and 960H.
 2. HDMI output 1080p (1920x1080) for high definition multi-channel live viewing only. High definition recording not supported, recording resolution is limited to a maximum of 960x480 per channel. Image quality and resolution is dependent on the type of camera connected to the DVR.
 3. Touch operation with Windows[™] 7 compatible touch screen monitor via USB connection.
 4. Hard drive mirroring and External storage expansion are selectable options. You select one or the other, but not both at the same time. The DVR supports a single external USB hard drive up to a maximum size of 2TB. The external hard drive must be self-powered to work with the system; it cannot receive power from the DVR's USB port. Footage on the external hard drive can only be accessed using the DVR or a Windows PC. The footage cannot be accessed on a Mac.
 5. Requires a high speed internet connection and a router (not included).
 6. When connected to a 960H capable DVR.
 7. Field of View, Diagonal.
 8. Stated IR illumination range is based on ideal conditions in typical outdoor night time ambient lighting and in total darkness. Actual range and image clarity depends on installation location, viewing area and light reflection / absorption level of object.
 9. Not intended for submersion in water. Installation in a sheltered location recommended.
- * If light level is too low, camera will switch over to B/W for increased light sensitivity.

† Instant Mobile Viewing on iPad[®], iPhone[®], BlackBerry (supported model numbers: 8900, 9000, 9700, 9800), Android (version 1.5 & above). Mobile phone data plan is required (not included). Router port forwarding required. For the latest smart phone compatibility list check www.lorextechnology.com as new smart phone models become available in the market.

†† Easily mounts to the back of an LCD monitor with VESA standard mounting holes and an independent stand. Requires clear access to the 175mm x 75mm, 100mm x 100mm, and 200mm x 200mm VESA mounting holes.

All trademarks belong to their respective owners. No claim is made to the exclusive right to use the trademarks listed, other than the trademarks owned by Lorex Technology Inc. We reserve the right to change models, configurations or specifications without notice or liability. Product may not be exactly as shown. Images are simulated.

Lorex Technology Inc.

250 Royal Crest Court
Markham, Ontario, Canada
L3R 3S1

901 Elkridge Landing Road, Suite 100
Linthicum, Maryland 21090,
USA.

© 2013 Lorex Technology Inc.
As our product is subject to continuous improvement, Lorex Technology & subsidiaries reserve the right to modify product design, specifications & prices without notice and without incurring any obligation. E&OE.

2-05142013