

## Contents

- IR Night Vision Camera\*
- Mounting Kit / Allen Key\*
- 60ft BNC / Power Extension Cable\*
- Power Adapter\*\*

\*Model CVC7711PK4 is a 4-pack that includes four of the listed items.

\*\* A "4-in-1" Power Adapter that provides power to four cameras or individual power adapters may be provided, depending on product configuration.

**WARNING** - A REGULATED UL / CSA APPROVED power supply is REQUIRED for use with this camera. Use of a non-regulated, non-conforming power supply can damage this product and voids the warranty.

## Features

- 700TVL resolution using a new 960H optimized image sensor<sup>1</sup>
- Lightweight yet extremely durable Polycarbonate housing
- Close-up recognition at night with auto light compensation prevents wash-out effect
- Day/Night mode: Picture automatically switches to B&W delivering better clarity in low light conditions
- BrightNight viewing with enhanced low light image sensor
- Night vision range up to 130ft in ambient lighting and up to 90ft away in total darkness<sup>2</sup>
- Anti-glare feature ensures clear images under strong lighting conditions
- ImageCool™ technology ensures optimal performance in extreme temperatures (-22° ~ 122°F / -30° ~ 50°C)
- Vandal resistant design with cable pass-through bracket
- Ideal for outdoor and indoor applications (IP66 Rated)<sup>3</sup>
- Removable camera base and integrated 3ft camera cable for hassle-free and flexible installation

## Disclaimers:

1. When connected to a 960H capable DVR.
2. Stated IR illumination range is based on ideal conditions in typical outdoor night time ambient lighting and in total darkness. Actual range and image clarity depends on installation location, viewing area and light reflection / absorption level of object.
3. Not intended for submersion in water. Installation in a sheltered location recommended.

## Warning/Caution

- Read this guide carefully and keep it for future reference.
- Follow all instructions for safe use of the product and handle with care.
- Use the cameras within given temperature, humidity and voltage levels noted in 'Camera Specifications'.
- Do not disassemble the cameras.
- Do not point the cameras directly towards the sun or a source of intense light.
- Use only the supplied regulated power supply. Use of a non-regulated, non-conforming power supply can damage this product and voids the warranty.
- Periodic cleaning may be required. Use a damp cloth only. Do not use harsh cleaners or aerosol cleaners.
- The supplied extension cable is rated for surface mounting only.
- Cables for in-wall / floor-to-floor installations are sold separately.

## Installation Tips

- Point the cameras where there is the least amount of obstructions (i.e. tree branches).
- Install the cameras where they are difficult for vandals to reach.
- Secure cabling so that it is not exposed or easily cut.
- Cameras rated for outdoor use. Installation in a sheltered location recommended.

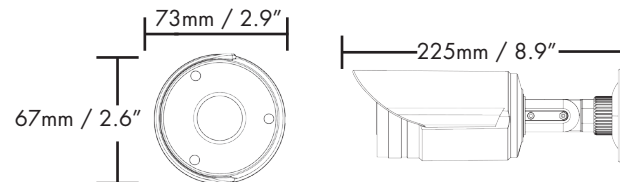
## Camera Specifications

Image Sensor	1/3" 960H Advanced Image Sensor
Video Format	NTSC
Effective Pixels	H: 960 V: 480
Resolution	700 TVL
Scan System	2:1 Interlace
Sync System	Internal
S / N Ratio	48dB (AGC Off)
Iris	AES
AES Shutter Speed	1/60 ~ 1/25,000 Sec.
Min. Illumination	0.1 Lux without IR LED 0 Lux with IR LED
Video Output	Composite 1.0Vpp @ 75ohm
Lens / Lens Type	3.6mm F2.0 / Fixed
FOV (Diagonal)	80°
Termination	BNC Type
IR LED Qty. / Type	18 pieces / 850nm
Night Vision Range*	130ft (40m) / 90ft (28m)
Power Requirement	12V DC ±10%
Power Consumption	Max. 260mA (w / IR)
Operating Temp. Range	-22° ~ 122°F / -30° ~ 50°C
Operating Humidity Range	<90% RH
Indoor/Outdoor**	Both (IP66)
Weight (including stand)	0.6lbs / 0.2kg

\* Stated IR illumination range is based on ideal conditions in typical outdoor night time ambient lighting and in total darkness. Actual range and image clarity depends on installation location, viewing area and light reflection / absorption level of object.

\*\* Not intended for submersion in water. Installation in a sheltered location recommended.

## Dimensions



FOR SUPPORT AND INFORMATION,  
VISIT [WWW.LOREXTECHNOLOGY.COM](http://WWW.LOREXTECHNOLOGY.COM)

- Product Information
- User Manuals
- Quick Start Guides
- Specification Sheets
- Software Upgrades
- Firmware Upgrades

Copyright © 2013 Lorex Technologies Inc.  
As our products are subject to continuous improvement, Lorex reserves the right to modify product design, specifications and prices, without notice and without incurring any obligation. E&OE

**LOREX**  
VIEW YOUR WORLD®  
960H WEATHERPROOF  
NIGHT VISION SECURITY CAMERA

Quick Start Guide  
English Version 1.0



**VANTAGE**  
CVC7711 SERIES

# Installing the Cameras

**ATTENTION** - Test each camera prior to selecting a permanent mounting location by temporarily connecting the camera(s) and cables to the DVR.

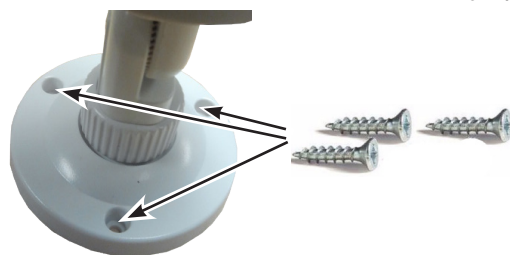
## Before installing the cameras:

- Decide whether to run the cables through the wall / ceiling (drilling required) or along the wall / ceiling.
- If you run the cables along the wall / ceiling, you must run the cable through the cable notch on the base. This will keep the camera base flush to the surface when mounted.



## To install the cameras:

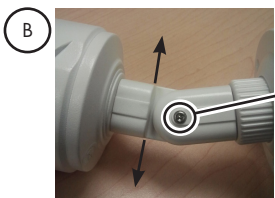
- Set the camera in the desired mounting position and mark holes for screws through the camera base.
- Drill the holes, then feed the cable through the mounting surface or cable notch and mount the camera stand to the surface using the provided screws. Make sure all screws are fastened tightly.



- Set the position and angle of the camera.



A) Turn the adjustment ring to tighten / loosen the stand connection. Adjust the camera's horizontal position.



B) Loosen lower screw with the Allen key to adjust the camera's vertical position.



C) Loosen upper screw with the Allen key to rotate the camera housing.

- Remove the protective film from the camera lens.

# Connecting the Cameras

## To Camera:



- Connect the BNC and power connectors to the camera.

## To DVR:



- Connect the BNC connector to the video input of your DVR.
- Connect the power connectors to the 4-in-1 power adapter. **OR** Connect each camera to an individual power adapter. See Power Adapter Types for details.

## Power Adapter Types

A "4-in-1" Power Adapter that provides power to four cameras or individual power adapters may be provided, depending on product configuration.



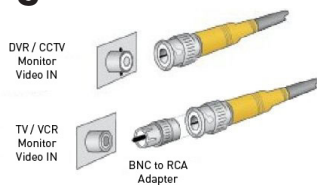
Individual Power Adapter



4-in-1 Power Adapter

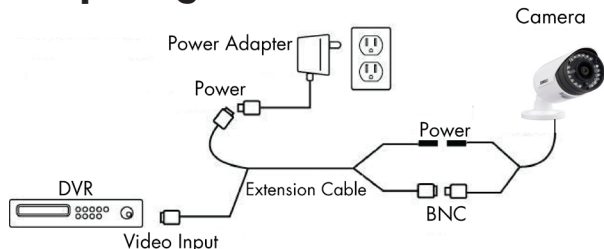
**NOTE:** Make sure the 4-in-1 power splitter cable is connected to the power adapter.

# Connecting the Cameras to a TV



Connect a BNC-to-RCA Adapter (not included, Lorex model # BNCB) to connect the extension cable to RCA inputs (i.e. for a TV connection).

## Setup Diagram



# Cable Extension Options

Extend the cable run for your camera up to 300ft or more depending on the cable type used. See table below:

Option	Cable Type	Max Cable Run Distance	Max # of Extensions
1	Regular BNC (sold separately)	180ft / 55m	3
2	'RG59' or 'Coax' or 'Coaxial BNC' (sold separately)	300ft / 92m	5
3	Lorex Universal Cable (sold separately)	300ft / 92m	3

## Notes:

- For optimal performance, consider using option 2 or 3. It is best to use the same cable type for the entire distance.
- Cable run recommendation based on typical camera power consumption (up to 500mA). For specialty cameras with higher current consumption, maximum cable run may be reduced. Consider providing power to the camera at the camera side, rather than at the end of the extension cable.
- Indicators that your cable run may be too long:
  - Video is permanently black & white (even during day time)
  - Video is distorted

# Troubleshooting

Problem	Solution
No picture / signal	<ul style="list-style-type: none"><li>Ensure your TV is on the correct input channel. Common terms of an input channel: INPUT, AV CHANNEL, LINE 1, LINE 2, AUX.</li><li>Ensure your DVR is properly connected to your TV / Monitor.</li><li>Ensure connections are properly connected.</li><li>Ensure the camera power supply is plugged in.</li></ul>
Picture is too bright	<ul style="list-style-type: none"><li>Ensure your camera isn't pointed directly at a source of light (e.g. sun or spot light).</li><li>Slide the sunshade (bullet cameras featuring adjustable sunshades only) forward to block excess light.</li><li>Move your camera to a different location.</li></ul>
Picture is too dark	<ul style="list-style-type: none"><li>If using during the day, the camera may not be getting enough light. Slide the sunshade (bullet cameras featuring adjustable sunshades only) backwards to let in more light.</li><li>Check the brightness and contrast settings of the device your camera connects to (TV / Monitor / DVR).</li></ul>
Night vision is not working	<ul style="list-style-type: none"><li>The night vision activates when light levels drop. The area may have too much light.</li></ul>
Picture is not clear	<ul style="list-style-type: none"><li>Check the camera lens for dirt, dust, spiderwebs. Clean the lens with a soft, clean cloth.</li><li>Make sure that the cable run is within the limitations specified in the section 'Cable Extension Options'.</li></ul>
Bright spot in video when viewing camera at night	<ul style="list-style-type: none"><li>Night vision reflects when pointing a camera at a window. Move the camera to a different location.</li></ul>
BNC connection does not connect to my TV	<ul style="list-style-type: none"><li>Use a BNC-to-RCA adapter (not included) at the end of the extension cable.</li></ul>