

## Package Contents

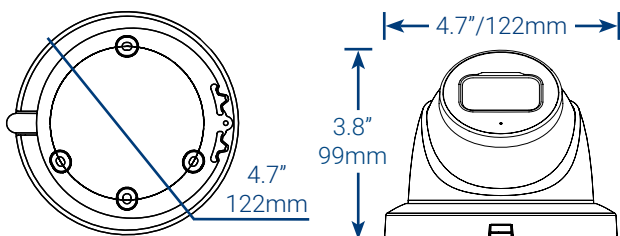
- 4K HD IP Dome Security Camera with Smart Motion Detection and Listen-in Audio
- Mounting Kit\*
- Mounting Template\*
- Ethernet Extension Cable with Pre-attached RJ45 Cable Gland\*
- Allen Key\*

\* Per camera in multi-camera packs.

### ATTENTION:

It is recommended to connect the camera to the NVR or an external PoE switch. If using a DC power adapter (not included) with the camera, a **REGULATED** power supply is **REQUIRED** for use with this camera. Use of a non-regulated, non-conforming power supply can damage this product and voids the warranty.

## Dimensions



## Using the RJ45 Cable Gland (Optional)

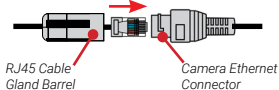
The RJ45 cable gland covers the camera's Ethernet connector and the RJ45 plug to provide weather-resistance and protection from dust, dirt and other environmental contaminants.

The RJ45 cable gland is pre-attached to the included Ethernet extension cable.



### To use the RJ45 cable gland:

Twist the RJ45 cable gland barrel securely onto the camera Ethernet connector.



**NOTE:** The RJ45 cable gland is weather-resistant. Seal the cap with silicone and/or electrical tape for additional sealing if it will be exposed to precipitation regularly.

## Cable Extension Options

Extend the cable run for your camera. Additional extension cables sold separately. See table below:

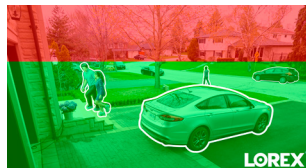
Cable Type	Max Cable Run Distance	Max # of Extensions
CAT5e (or higher) Ethernet cable	300ft (92m)	3

- You can use a RJ45 coupler or switch (not included) to connect male ends of Ethernet cable together.
- To extend the cable run beyond 300ft (92m), a switch will be required (sold separately).

## Important Installation Guidelines

### Optimizing Person and Vehicle Detection Accuracy:

- Angle the camera so that objects of interest appear in the bottom 1/3 of the camera image.
- Choose a location where objects of interest will be no further than 50ft (~15m) from the camera.

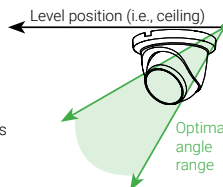


Lower accuracy for objects further away than 50ft (~15m) and/or in the top 2/3 of the image.

Optimal accuracy for objects within 50ft (~15m) and in the bottom 1/3 of the image.

- Angle the camera between 30°~60° down from the level position.
- Install the camera between 8-16ft (2.5-5m) off of the ground.

**NOTE:** Accuracy of person and vehicle detection will be influenced by multiple factors, such as the object's distance from the camera, the size of the object, and the height and angle of the camera. Night vision will also impact the accuracy of detection.



### Additional Installation Tips:

- Point the camera where there is the least amount of obstructions (e.g., tree branches).
- Install the camera where vandals cannot easily reach.
- Secure cabling so that it is not exposed or easily cut.
- This camera is rated for outdoor use. Installation in a sheltered location is recommended.
- Smart motion detection is enabled by default. When enabled, the camera's recording frame rate is 20 frames per second.
- To obtain the maximum 30 frames per second, smart motion detection must be disabled.

## Safety Precautions

- Read this guide carefully and keep it for future reference.
- Follow all instructions for safe use of the product and handle with care.
- Use the camera within given temperature, humidity and voltage levels noted in the camera's specifications.
- Do not disassemble the camera.
- Do not point the camera directly towards the sun or a source of intense light.
- Use only the supplied regulated power supply provided with the product. Use of a non-regulated, non-conforming power supply can damage the product and void the warranty.
- Periodic cleaning may be required. Use a damp cloth only. Do not use any harsh, chemical-based cleaners.
- The supplied cable is rated for surface mounting only. Cables for in-wall and floor-to-floor installations are sold separately (CMR type). These and other cables are available at [lorex.com](http://lorex.com).

## Need Help?

Visit us online for up-to-date software and complete instruction manuals

- 1 Visit [lorex.com](http://lorex.com)
- 2 Search for the model number of your product
- 3 Click on your product in the search results
- 4 Click the **Downloads** tab



Copyright © 2023 Lorex Corporation  
As our products are subject to continuous improvement, Lorex reserves the right to modify product design, specifications and prices, without notice and without incurring any obligation. E&OE. All rights reserved.

# LOREX®

4K HD IP Dome Security Camera  
with Smart Motion Detection  
and Listen-in Audio

Nocturnal Series  
**Lorex N10**  
**LNE9252**

## Quick Start Guide



[lorex.com](http://lorex.com)

## Installation Tips

- Point the camera where there is the least amount of obstructions (i.e., tree branches).
- Install the camera where vandals cannot easily reach.
- Secure cabling so that it is not exposed or easily cut.
- This camera is rated for outdoor use. Installation in a sheltered location is recommended.

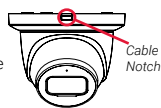
## Installing the Camera

### ATTENTION:

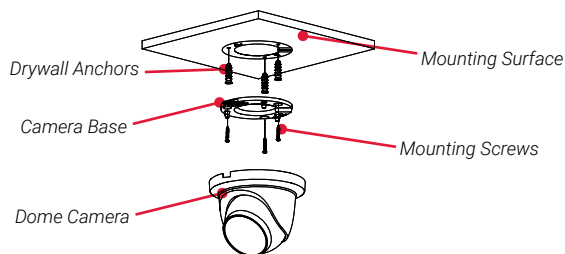
Test your camera prior to selecting a permanent mounting location by temporarily connecting the camera and cable to your NVR.

### Before Installing the Camera

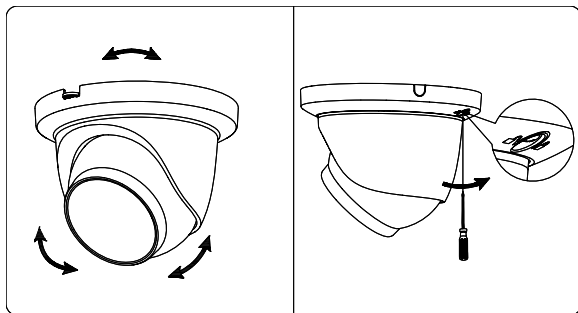
- Decide whether to run the cables through the wall / ceiling (drilling required) or along the wall / ceiling.
- If you run the cables along the wall / ceiling, you must run the cable through the **cable notch** on the base. This will keep the camera base flush to the surface when mounted.



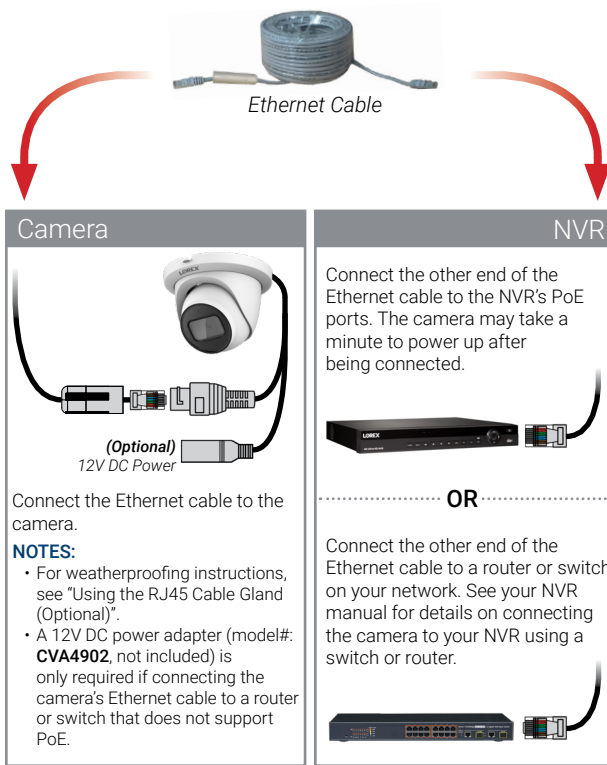
### To install your camera:



1. Use the included mounting template to mark holes for the mounting screws and camera cable.
2. Drill holes for the mounting screws and camera cable.
3. Feed the camera cable through the camera base. If you are running the cables against a wall or ceiling, make sure to pass the cable through the cable notch as shown above.
4. Connect the cables as shown in the section 'Connecting the Camera'.
5. Mount the camera base to the mounting surface using the included screws and optional drywall anchors.
6. Angle the dome camera as shown below.
7. Use the included Allen key to tighten the dome camera all the way.
8. Remove the vinyl film from the camera lens when your installation is complete.



## Connecting the Camera

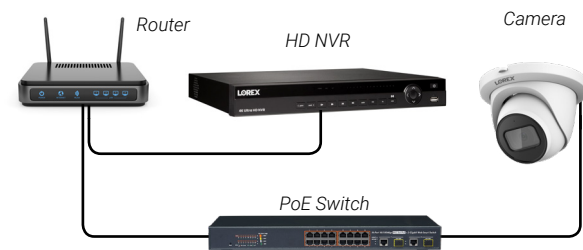


## Setup Diagram

### Scenario 1: Connect Cameras to NVR



### Scenario 2: Connect Cameras to Local Area Network (LAN)



### ATTENTION:

This camera is only compatible with select NVRs. For a list of compatible recorders, visit [lorex.com/compatibility](http://lorex.com/compatibility).

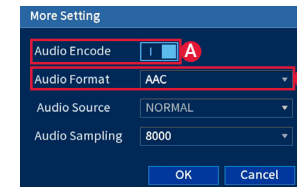
## Audio Settings

### ATTENTION:

**Audio recording and listen-in audio are disabled by default.** Audio recording and/or use of listen-in audio without consent is illegal in certain jurisdictions. Lorex Corporation assumes no liability for use of its products that does not conform with local laws.

### To enable audio recording and listen-in audio:

1. From Live View, right-click and click **Main Menu**. Enter the system user name (default: **admin**) and password.
2. Click **Camera** and select **Recording**.
3. Under **Channel**, select the channel where the audio-capable camera is connected.
4. Under **Main Stream**, click the **More Setting** button.
5. In the **More Setting** window:
  - A. Enable **Audio Encode** for audio recording and listen-in audio.  
**NOTE:** Listen-in audio requires a monitor with speakers or speakers connected to the NVR.
  - B. Select the format that will be used to record audio.  
**ACC** is recommended.
6. Click **OK** to save changes.



**NOTE:** These instructions are based on current NVR interface. For the most up-to-date instructions, see your NVR's instruction manual on [lorex.com](http://lorex.com).

## Disclaimers

- For a full list of compatible recorders, visit [lorex.com/compatibility](http://lorex.com/compatibility).
- Not intended for submersion in water. Installation in a sheltered location recommended.
- This camera includes an Auto Mechanical IR Cut Filter. When the camera changes between Day/ Night viewing modes, an audible clicking noise may be heard from the camera. This clicking is normal, and indicates that the camera filter is working.

## Troubleshooting

Problem	Solution
No picture / signal	<ul style="list-style-type: none"><li>• Ensure the camera is connected to a compatible NVR. For full camera compatibility, visit <a href="http://lorex.com/compatibility">lorex.com/compatibility</a>.</li><li>• The camera may take up to 1 minute to power up after being connected to the NVR. Wait two minutes before following the steps below.</li><li>• Ensure the camera is connected to your NVR or to your local network.</li><li>• If you are not using PoE, you must connect the camera to a 12V DC power adapter (not included).</li><li>• If the camera is connected to the LAN, you must search your network for cameras using the NVR. See the NVR's instruction manual.</li><li>• Ensure your NVR is properly connected to a TV/monitor.</li><li>• There may be an issue with your extension cable run. Connect the camera to the NVR using a different Ethernet cable.</li></ul>
Picture is too bright	<ul style="list-style-type: none"><li>• Ensure your camera isn't pointed directly at a source of light (e.g., sun or spot light).</li><li>• Move your camera to a different location.</li><li>• Check the brightness and contrast settings on the NVR.</li></ul>
Picture is too dark	<ul style="list-style-type: none"><li>• Check the brightness and contrast settings on the NVR.</li></ul>
Night vision is not working	<ul style="list-style-type: none"><li>• The night vision activates when light levels drop. The area may have too much light.</li></ul>
Picture is not clear	<ul style="list-style-type: none"><li>• Check the camera lens for dirt, dust, spiderwebs. Clean the lens with a soft, clean cloth.</li><li>• Make sure that the cable run is within the limitations specified in the section 'Cable Extension Options'.</li><li>• Remove the vinyl film from the camera lens when your installation is complete.</li></ul>
Bright spot in video when viewing camera at night	<ul style="list-style-type: none"><li>• Night vision reflects when pointing a camera through a window. Move the camera to a different location.</li></ul>
Picture is in color in dark conditions	<ul style="list-style-type: none"><li>• This camera comes with an image sensor that is extra sensitive to light, meaning that the camera stays in color mode at low-light conditions. For instructions on how to make your camera switch to night mode, visit <a href="http://lorex.com">lorex.com</a>, and search for "How do I make my camera switch to night mode?"</li></ul>
No audio	<ul style="list-style-type: none"><li>• Audio is only supported on Lorex HD NVRs. For a list of compatible recorders, visit <a href="http://lorex.com/compatibility">lorex.com/compatibility</a>.</li><li>• Ensure NVR volume is turned on / turned up.</li><li>• Ensure audio function on camera is turned on (see 'Audio Settings').</li><li>• Ensure audio is turned up on viewing device.</li></ul>
Low frame rate (frames per second)	<ul style="list-style-type: none"><li>• To obtain the maximum 30 frames per second, you must connect to a compatible recorder. For a complete list of compatible recorders, visit <a href="http://lorex.com/compatibility">lorex.com/compatibility</a>.</li><li>• If your recorder is capable of supporting 30 frames per second, you will need to disable smart motion detection in order to use the maximum frame rate.</li></ul>