

PACKAGE CONTENTS:



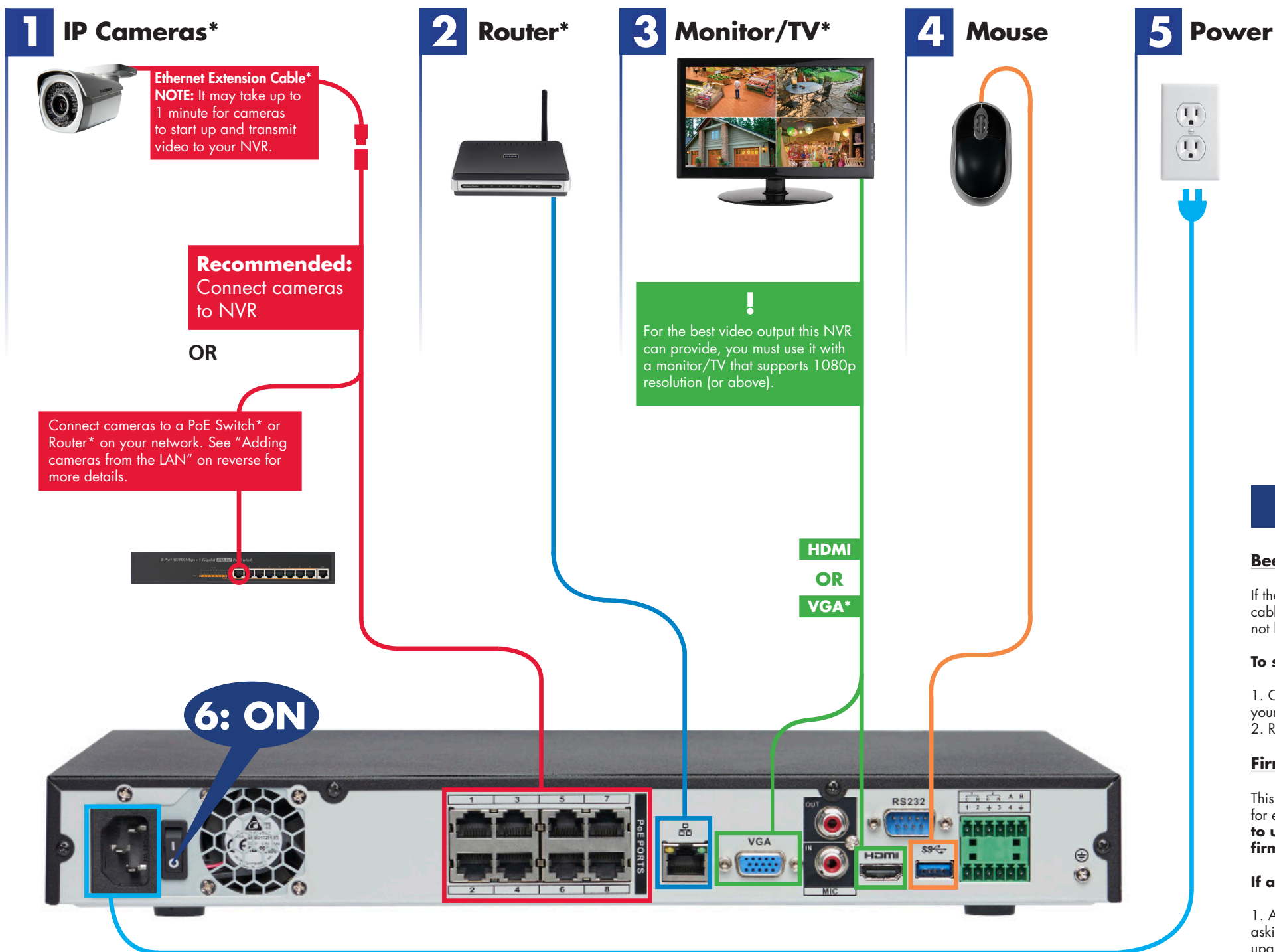
Need Help?

Visit us online for up-to-date software and complete instruction manuals.

- 1 Visit www.lorextechnology.com
- 2 Search the model number of your product
- 3 Click on your product in the search results
- 4 Click on the **Downloads** tab

Information in this document is subject to change without notice. As our products are subject to continuous improvement, Lorex Corporation and our subsidiaries reserve the right to modify product design, specifications and prices, without notice and without incurring any obligation. E&OE © 2016 Lorex Corporation. All rights reserved.

Connecting your system



8 channel configuration shown. 16/32 channel will have the respective number of video inputs. For camera compatibility information, visit www.lorextechnology.com/support

*Not included/sold separately.

Using the mouse

- Left-click:**
 - During split-screen display mode:** Click an individual channel to view it in full-screen. Click again to return to the split-screen display mode.
 - While navigating menus:** Click to open a menu option.
- Right-click:**
 - During live view:** Right-click anywhere on the screen to open the Quick Menu.
 - Within system menus:** Right-click to exit menus.



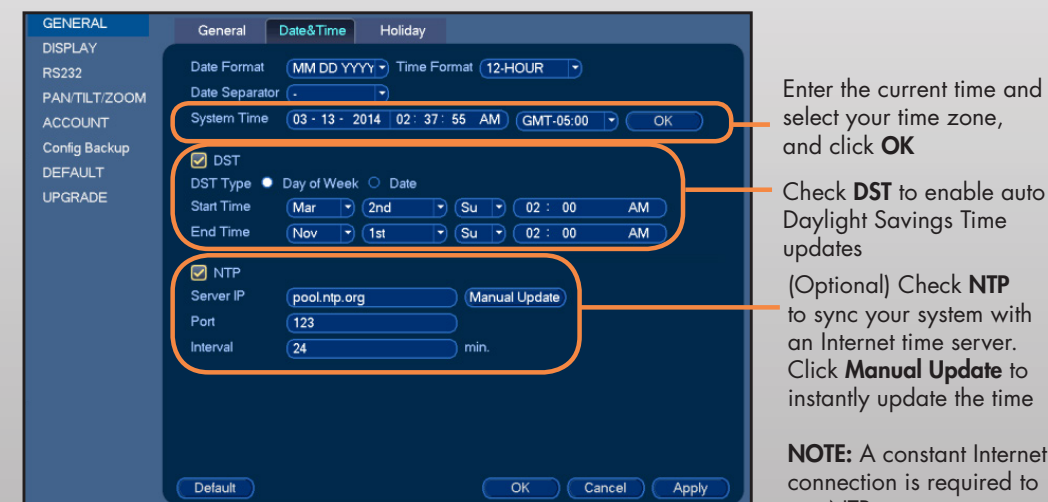
Setting the date and time

It is important to set the correct time to ensure accurate time stamps on video recordings.

- In live view, right-click and click **Main Menu**.
- Log in using the system user name (default: **admin**) and password (default: **000000**).
-



- Click **General** and select the **Date&Time** tab.



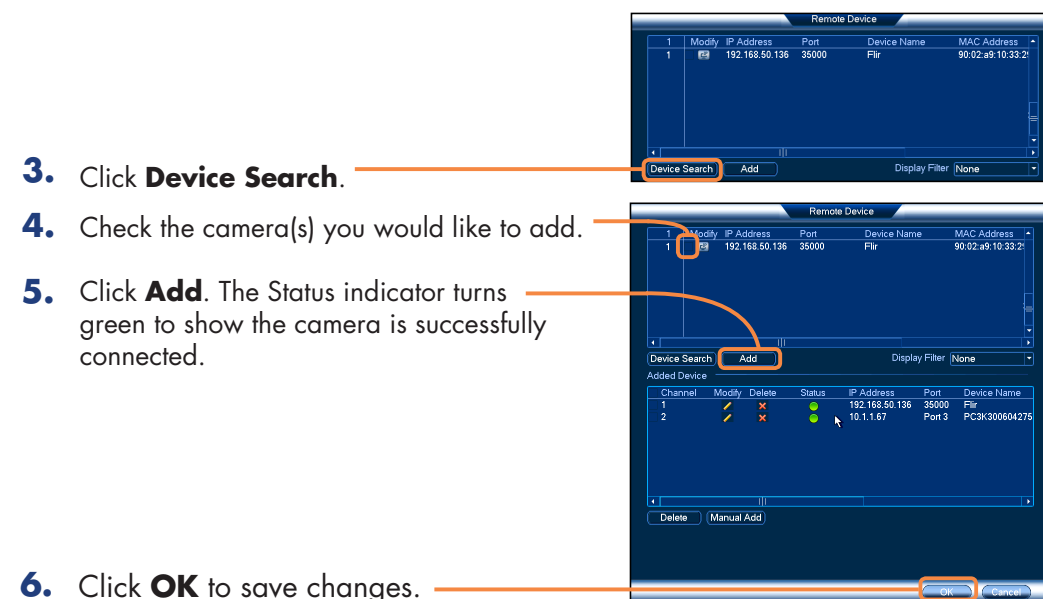
- Click **Apply** to save changes.

Adding cameras from the LAN

Follow the steps below to add cameras that are not directly connected to the Power over Ethernet (PoE) ports on the back of the NVR.

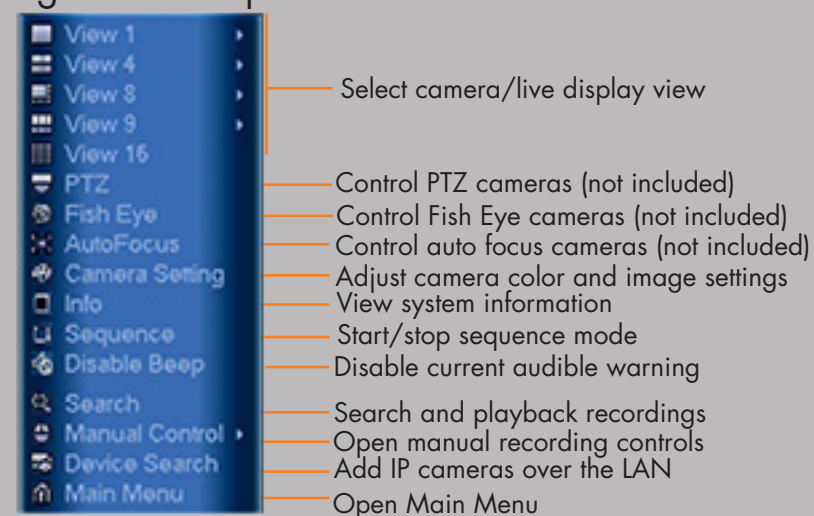
NOTE: Please visit www.lorextechnology.com/support for a list of compatible Lorex IP cameras.

- Connect the camera to a router or switch on the same network as the NVR.
- Right-click and select **Device Search**. Log in using the admin account (default User Name: **admin**; default Password: **000000**).





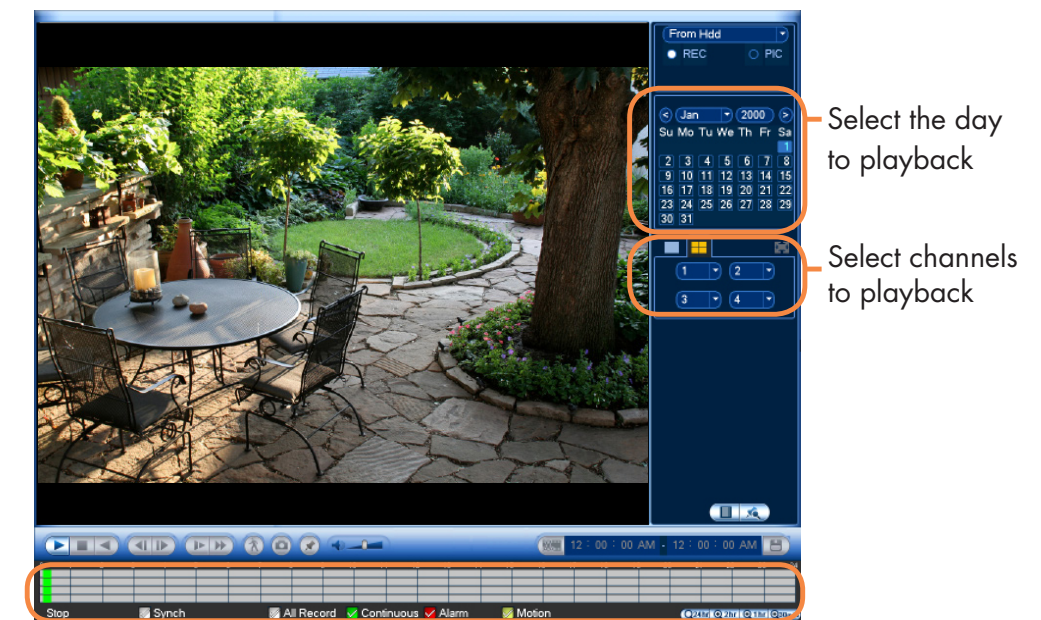
Using the Quick Menu

Right-click to open the Quick Menu.



Playback and search

- From live view, right-click and then click **Search**.
- Log in using the system user name (default: **admin**) and password (default: **000000**).
- Use the calendar on the right to select the date to playback.
- Use the drop-down menus to select the channels you would like to playback. Click the display options ( ) to playback multiple channels simultaneously.
- Click inside the video bar to select the playback time. Playback starts immediately at the selected time.



Click inside the bar to select a playback time.